

About Los Angeles Harbor College

Mission

Los Angeles Harbor College (Harbor College) serves our diverse community by providing access to associate and transfer degrees, certificates, economic and workforce development, and adult and noncredit instruction. We promote equity, diversity, and student success through academic programs and support services that ensure our students become productive members of a global society.

Vision

Harbor College provides a stimulating learning environment that prepares members within the community to meet goals and opportunities successfully.

Values

Student Success, Excellence, Integrity, A Supportive Environment, Personal and Institutional Accountability, and Civic Responsibility.

History

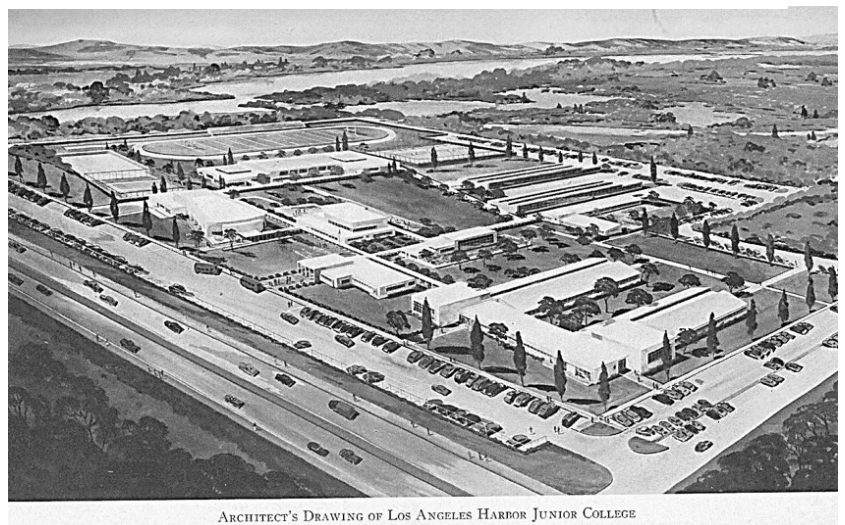
Los Angeles Harbor College officially opened in September 1949. By 1963, the campus grew to include five buildings, including the Seahawk Center—the student activity hub. The College was first known as “Harbor Tech” and then as “Harbor Junior College” before adopting its present name in 1965. The initial enrollment totaled 650 students, mostly male and mostly from nearby San Pedro High School. By 1965, the College had grown to approximately 5,000 students.

Over the next 30 years, the campus grew to house more than 10 instructional, student services, and administration buildings. In 2000, the Los Angeles Community College District adopted the largest

facilities construction bond issued in the history of the district. With this support, the College renovated the Fine Arts, Theatre, Nursing, and Music buildings and constructed the Northeast Academic Hall, Student Services and Administration building, central plant buildings, the PE/Wellness Center, the Child Development Center, the Science Complex, the Technology building, and the Library and Learning Resources building.

The new Student Union, opened in 2019, is the most recent building added to the campus footprint. The campus is also the home of the Dr. Richard A. Vladovic Harbor Teacher Preparation Academy Middle College High School (aka HTPA), which opened new facilities in

Figure 1.2 Architectural rendering of the new Los Angeles Harbor Junior College from 1949



ARCHITECT'S DRAWING OF LOS ANGELES HARBOR JUNIOR COLLEGE

2018 after operating for 16 years in bungalows. A new Southeast Hall, set to open in 2026, will house the nursing program, health center, the Equity Village, and several student support service offices.

Today, Harbor College enrolls approximately 12,000 students per year serving ten area high schools at a single campus location,

approximately 20 miles south of downtown Los Angeles and a few miles from the Port of Los Angeles. With 60 percent of students identifying as Hispanic, the College is designated as a Hispanic Serving Institution. Nearly 65 percent of the students are 24 years or younger, and approximately 55 percent of incoming students indicate their educational goal is to transfer to a four-year university.

Figure 1.3 Los Angeles Harbor College, 2023



Accreditation

Los Angeles Harbor College is a public two-year college providing educational services under the Los Angeles Community College District Board of Trustees. Harbor College's accreditation was reaffirmed by the Accrediting Commission for Community and Junior College in June 2023.



Fall 2022 Facts at a Glance

Location and Phone Number	1111 Figueroa Place Wilmington, CA 90744 (310) 233-4000
Website	www.lahc.edu
Enrollment	17,840
Student Headcount (credit)	7,644
Gender	
Female	60.5%
Male	38.1%
Non-Binary	0.7%
Unknown	0.7%
Ethnicity	
Asian	11.4%
Black	10.3%
Hispanic	61.6%
Multi-ethnic	4.4%
Pacific Islander	0.6%
Unknown	1.5%
White	10.2%
Fees and Tuition	
Enrollment Fee	\$46 per unit
Student Representation Fee	\$2
Health Fee	\$19
Out of State/Non-Resident Tuition Fee	\$299 per unit
International Student Fee	\$345 per unit
Academic Programs	<ul style="list-style-type: none"> • Associate and Transfer degrees in 54 programs • Credit certificates in 46 programs • Non-credit certificates in 15 programs
Academic Divisions	10 academic divisions that are over 76 disciplines
Unrestricted General Fund Budget (2022-23)	\$44,064,194